



# iCLASS® Tag Ordering Guide

The iCLASS contactless smart Tag offers read/write capability. iCLASS enable existing credentials or non-metallic devices such as cell phones or PDAs by adhering the iCLASS Tag.

Please ensure each required option has been checked with the appropriate choice to fulfill a completed order form.

## 206 Base Model Part Number Worksheet

### iCLASS Memory Size and Allocation (Check One)

- 0 - 2k Bits (256 Bytes) with 2 Application Areas
- 1 - 16k Bits (2k Bytes) with 2 Application Areas
- 2 - 16k Bits (2k Bytes) with 16 Application Areas
- 3 - 32k Bits (4K Bytes) Application areas 16k/2+16k/1
- 4 - 32k Bits (4K Bytes) Application areas 16k/16+16k/1

### Programming (Check One)

- N - Non-Configured, Non-Programmed iCLASS. Programming Information Not Required.
- C - Configured, Non-Programmed iCLASS. Programming Information Not Required.
- P - Programmed iCLASS. Specify Programming Information.

### Front Packaging (Check One)

- S - Gray with HID Standard Artwork
- K - Black with HID Standard Artwork
- C - Custom Artwork – Specify Custom Artwork Number?

### Back Packaging

- S - Adhesive Backing

### Tag Numbering<sup>1</sup> (Check One)

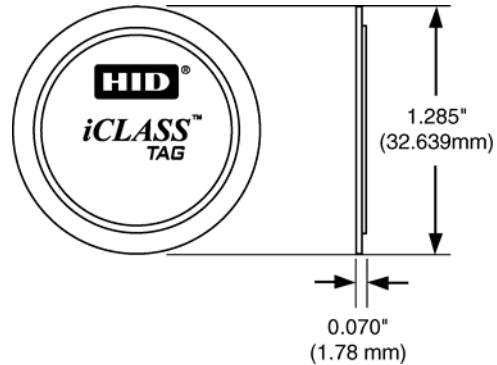
- M - Sequential Matching Internal/External (Inkjetted)
- N - No External Tag Numbering
- S - Sequential Internal/Sequential Non-Matching External (Inkjetted)
- R - Random Internal/Non-Matching Sequential External (Inkjetted)

### Slot Punch

- N - None

### Optional Custom Artwork<sup>1</sup>

- \_\_\_\_\_ (Specify Artwork Number – Refer to the Custom Artwork Forms for new Artwork)



Please enter your final Tag options from check boxes above. Example: 2062CSSNN

|                   |     |  |  |  |   |   |   |                      |
|-------------------|-----|--|--|--|---|---|---|----------------------|
| Final Part Number | 206 |  |  |  | S | N | - | (Optional Artwork #) |
|-------------------|-----|--|--|--|---|---|---|----------------------|

## iCLASS Tag Programming Information

Bit Numbers \_\_\_\_\_ (example: 26 bit)      Format Number \_\_\_\_\_ (example: H10301)

Facility Code \_\_\_\_\_

(Custom Formats) Site Code \_\_\_\_\_ City Code \_\_\_\_\_ OEM Code \_\_\_\_\_

Internal Card # Start \_\_\_\_\_ Stop \_\_\_\_\_ External Card # Start \_\_\_\_\_ Stop \_\_\_\_\_

PIN:  Sequential: Start # \_\_\_\_\_       Random: Length \_\_\_\_\_

Special Instructions: \_\_\_\_\_

<sup>1</sup> The external tag number is placed on the back of the tag. <sup>2</sup> For new artwork files, contact Customer Service for custom artwork number, lead-times, minimum order quantities, and cost. <sup>3</sup> The iCLASS Tag is not for use on cards that use full insertion or tractor feed type readers.

Do not adhere to metal surfaces. Metal shields the RF, making the tag inoperable. Due to variations in cards and reading devices, HID does not claim that the iCLASS Tag will work in every situation. Functional and non-functional iCLASS Tags are available for compatibility testing with existing credential and reader technologies. Compatibility should be confirmed prior to ordering.

