



1346 - ProxKey® II Keyfob Ordering Form

Please ensure each required option has been checked with the appropriate choice to fulfill a completed order form.

* 1346 Base Model **Part Number Worksheet** (* = Required Fields)

*** Programming (Check One)**

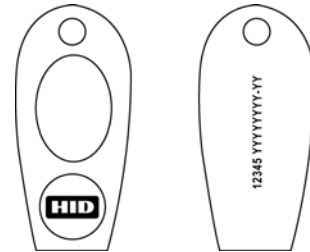
- L - Programmed, Low Frequency (125 kHz). Specify Programming Information.
- N - Non-Programmed, Low Frequency (125 kHz). Programming Information Not Required.

*** Front Packaging**

- S - Standard HID Logo

*** Back Packaging**

- S - Standard



Front Packaging Back Packaging

12345 = Keyfob ID Number
YYYYYYYY-YY = Sales Order Number

*** Keyfob Numbering¹ (Check One)**

- M - Sequential Matching Internal/External (Inkjetted)
- N - No External Card Numbering
- S - Sequential Internal/Sequential Non-Matching External (Inkjetted)
- R - Random Internal/Non-Matching Sequential External (Inkjetted)
- A - Sequential Matching Internal/External (Engraved)²
- B - Sequential Internal/Sequential Non-Matching External (Engraved)²
- C - Random Internal/Non-Matching Sequential External (Engraved)²

*** Slot Punch³**

- N - No Option

Please enter your final ProxKey options from check boxes above. Example: 1346LSSMN

* Final Part Number	1346		S	S		N	-	(Optional Artwork #)
---------------------	------	--	---	---	--	---	---	----------------------

*** 125 kHz ProxKey Programming Information**

Bit Numbers _____ (example: 26 bit) Format Number _____ (example: H10301)

Facility Code _____

(Custom Formats) Site Code _____ City Code _____ OEM Code _____

Internal Key No. Start _____ Stop _____

External Key No. Start _____ Stop _____

Special Instructions: _____

¹ The external number is placed on the back of the Keyfob.
² For Laser Engraved external numbers, consult factory for lead times and cost.
³ Key Ring sold separately (Part Number: 57-0001-02).